

# THE GREEN SHEET

CENTRAL PENNSYLVANIA GOLF COURSE SUPERINTENDENTS ASSOCIATION

— Founded April 11, 1939

## HARRISBURG

Course:  
**READING COUNTRY CLUB**

Host:  
**Stuart Hartman**

Date:  
**September 15, 1992**

**Lunch: 11:00-1:00**  
Buffet \$15.00

**Cocktails 6:00 p.m.**  
Dress: Casual (no jeans)

**Dinner: 7:00 p.m.**  
Sit-Down Dress: Informal  
Cost: \$20.00

**Tee Off:**  
1:00 Shotgun  
Cost of Carts: \$15.00 per person — Mandatory  
Shower Facilities Available  
Guests Permitted — No Greens Fee  
\$50.00 Total

**Reservations: Mail In Only to Patti Wall**  
Deadline: September 5, 1992

**CARLISLE**

**READING**

**GETTYSBURG**  
**CHAMBERSBURG**

**LEBANON**  
**LANCASTER**

**YORK**

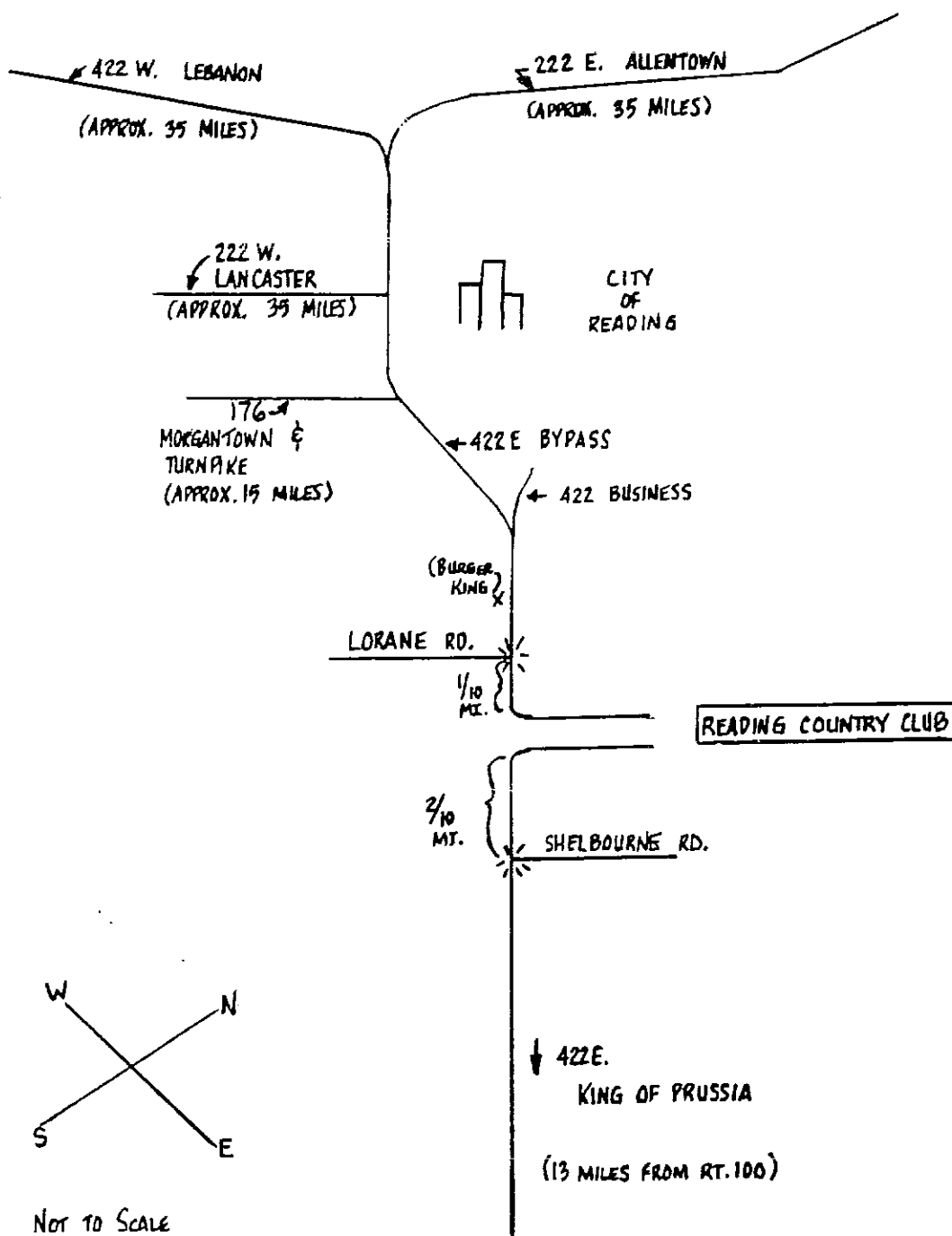
# COURSE PROFILE

Reading Country Club was built in 1923 by A. H. Findley. It is an 18 hole private club.

## HOST SUPERINTENDENT PROFILE

Stuart Hartman has been at Reading Country Club for 5 years. He is a graduate from State University of New York. Stuart is married to Cheryl and has two little girls, Amanda 4 and Erica 2.

### DIRECTIONS TO READING COUNTRY CLUB



*President*  
John Chassard  
Lehigh Country Club  
(215) 967-4643

*Vice President*  
Dave Rafferty  
Chambersburg Country Club  
263-9747

*Secretary/Treasurer*  
Tony Goodley, CGCS  
Heritage Hills Golf Resort  
(717) 755-1919

*President Emeritus*  
Jeff Fry  
Lebanon Country Club  
(717) 273-1944

*Board of Directors*  
Sam Snyder, CGCS 1992  
Colonial Country Club  
(717) 545-6760

Mark Eichner 1992  
Lancaster Country Club  
(717) 392-8638

Jeff Edwards 1993  
North Hills Country Club  
(215) 887-2029

John Dougherty 1993  
Overlook Golf Club  
(717) 569-6221

Mel Leaver 1994  
Brookside Country Club  
(215) 966-2354

Ken Pepple 1994  
Wyncote Country Club  
(215) 932-4610

*Education Committee*  
Sam Snyder, CGCS

*Membership Committee*  
Mel Leaver

*Executive Commission*  
John Dougherty

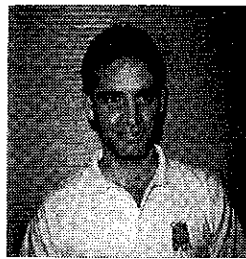
*Public Relations/Social Committee*  
Mark Eichner

*Bylaws/Planning*  
Jeff Edwards

*Chapter Relations/Nominations*  
Jeff Fry

*Past Presidents*  
Fred N. Baker  
Charles A. Barley  
C. William Black, CGCS  
Greg Borzok, CGCS  
John Boyd  
Dwight H. Brubaker  
Robert Beyer, CGCS  
Charles H. Cadiz, CGCS  
Kenneth Dietrich, CGCS  
Greg Fantuzzi, CGCS  
Richard Funk  
Jeff Fry  
Michael C. Hair  
Riley E. Heckert  
Fred Heinlen  
Cameron G. Henderson  
James Jones, CGCS  
Bryon F. Knoll, Jr.  
Harry I. Latchaw  
James Maclaren, CGCS  
John McCormick  
George Morris  
Y. Lewis Payson  
David P. Pörtz, CGCS  
Daniel L. Snowberger  
Richard Suttles  
Edward Tabor  
Bill Wall, Jr.  
David Weitzel, CGCS  
Michael Wilt  
Richard Wilt  
Terry Wueschinski, CGCS

## President's Message



Greetings once again! Its July 31st, early morning, raining, and about 65 degrees. I love it. Unfortunately I have nothing motivational or inspiring to pass on, lucky you. But I do have a joke:

A golfer came to the 17th hole with only two balls left, an old one and a new one. The tee shot had to pass over a fairly large body of water and the man scratched his head, wondering which of the balls to use. As he stood on the tee mulling this problem, the golfer heard a voice boom out of the heavens: "Have confidence, play . . . the . . . new . . . ball!" He looked around and saw no one. So he teed up the new ball and addressed it. As he wagged the club, he again heard the voice from the heavens: "Take . . . a . . . practice . . . swing." Practice swing? What was he to do, other than follow this celestial advice. He stepped away from the ball and took the practice swing. He was brimming with confidence as he readdressed the ball. But before he began his swing, the voice boomed again: "Play . . . the . . . old . . . ball."

I know, golf jokes get real old, so I will leave you with one small inspiring statement: Success is getting up just one more time than you fall down.

Hope you have a dry, wet, cool, sunny, cloudy August. See Ya!

MEETING	HOST SUPERINTENDENT	TOURNAMENT	SPEAKER TOPIC	SPEAKER
SEPT. 24th Reading C.C.	Stuart Hartman	Blind Partners	unconfirmed	unconfirmed
OCTOBER Silver Creek - Joint w/Philly	Bill Yob		Joint with Philadelphia	To Be Announced
NOV. 4th Fox Chase	Steve Graybill	Scramble	Annual Meeting - Elections	No Speaker

## EDUCATIONAL NOTES

**SAM SNYDER**  
**EDUCATION CHAIRMAN**  
**COLONIAL C.C.**

Our speaker for this month at the time of this printing is yet unconfirmed.

There will be no pesticide points for this month.

## **“Central Penn Newsletter Supporters”**

**FISHER & SON CO. INC.**  
237 E. KING STREET  
MALVERN, PA 19355  
(215) 644-3300  
Distributors of turfgrass & horticulture supplies

**GOLF CARS, INC.**  
4180 SKYRON DRIVE, BOX 247  
BUCKINGHAM, PA 18912  
(215) 340-0880  
Clubcar, Golfcars, and Utility Vehicles

**LAWN & GOLF SUPPLY CO. INC.**  
P.O. BOX 447, 647 NUTT RD.  
PHOENIXVILLE, PA 19460  
(215) 933-5801  
Turf maintenance equipment & supplies

**POCONO TURF SUPPLY CO., INC**  
P.O. BOX 372  
HORSHAM, PA 19044  
(215) 672-9274  
Turf supplies and Evergreen turf covers

**AER-CORE, INC.**  
47 HERON HILL DRIVE  
DOWNTOWN, PA 19335  
(215) 458-0890  
Contract Aerification

**JERSEY TURF SPECIALISTS**  
JACK MONTECALVO  
37A ELMTOWN BLVD.  
(609) 567-9001  
Deep tine aerification with Verti-drain & hydrojet

**PRO-LAWN PRODUCTS INC.**  
DONALD M. HOLLINGER  
858 MOUNT JOY ROAD  
MANHEIM, PA 17545

**CUSHMAN, RYAN, RANSOME TURF EQUIP.**  
JEFF SHOEMAKER  
539 MAPLE SHADE RD.  
KIRKWOOD, PA 17536  
(717) 529-2792

**SEEDWAY, INC.**  
55 WILLOW SPRINGS CIRCLE  
YORK, PA 17402  
(717) 764-9814  
Seed, Fertilizer

**EGYPT FARMS, INC.**  
P.O. BOX 223  
WHITE MARSH, MD 21162  
(410) 335-3700  
Supplier of Soil Mixes to Golf Courses and Landscapers

**FARM AND GOLF SUPPLY CO., INC.**  
BENNETT WARTMAN  
7709-7725 RIDGE AVENUE  
PHILADELPHIA, PA 19128  
(215) 834-6015 / (215) 483-5000  
Golf supplies and chemicals and fertilizers

**NOR-AM CHEMICAL CO.**  
1133 SOMERSET STREET  
SOMERSET, NJ 08873  
(908) 846-8173 / (816) 891-7580

**STULL EQUIPMENT CO.**  
TURF & INDUSTRIAL DIVISION  
201 WINDSOR ROAD  
POTTSTOWN, PA 19464  
800-724-1024  
Turf equipment sales

**BLUE RIDGE PEAT FARMS INC.**  
RR 1, BOX 292A  
WHITE HAVEN, PA 18661  
(717) 443-9596  
Top dressing, sand, potting soil, construction mix

**PHILADELPHIA TURF CO.**  
THOMAS DRAYER  
4049 LANDISVILLE ROAD  
DOYLESTOWN, PA 18901  
(215) 340-5431  
Turf maintenance equipment and irrigation equipment

**AQUATROLS**  
PHIL O'BRIEN  
5 OLNEY AVE. No. 26  
Cherry Hill, NJ 08003  
(800) 257-7797  
Water management products

**GOLF CART SERVICES, INC.**  
ROBERT GOBRECHT  
4425 YORK ROAD  
NEW OXFORD, PA 17300  
(717) 624-2900

**MILLERS NEW TURF SOLUTIONS**  
ED MILLER  
515 SOUTH MARKET STREET  
MILLERSBURG, PA 17061  
(717) 692-5786  
Distributor of Isolite  
Porous ceramic soil conditioner and remote sensing infrared aerial photography

**AQUA-FLO, INC.**  
P.O. BOX 752, 320 BASIN ROAD  
HAMMONTON, NJ, 08037  
(800) 524-0895 or (609) 561-1777  
Irrigation equipment, pumping stations, aerators

**FERTL SOIL**  
ALAN AMECHE  
P.O. BOX 887  
DEVON, PA 19333  
(215) 688-5656

**FINCH TURF EQUIPMENT, INC.**  
THOMAS STAGER  
1627 LITTLESTOWN PIKE  
WESTMINSTER, MD 21157  
(410) 848-7211

**O.M. SCOTTS & SONS CO.**  
PAUL WICKEY  
RD 1, BOX 109  
BERLIN, PA 15530  
(814) 267-4432

---

## **AFFILIATE HIGHLIGHT**

### **AFFILIATE MEMBERS OF THE MONTH . . .**

#### **Ed Miller — Miller's New Turf Solution**

After 20 years in various sales fields, from automobiles to heavy concrete structures, Ed started his own company, Miller's New Turf Solution, a licensed distributor for Isolite in 16 counties of south central Pennsylvania. Isolite is a soil product that is permanent, conserves water, nutrients, and promotes healthier turf via a healthier root zone. Ed is concerned about our environment, therefore his company sells only environmentally safe products and services. Ed is married to Karen for 26 years, they have two boys, Ed Jr., 22 and Christopher, 18.

#### **Shawn Barry — Nor-Am Chemical Co.**

Shawn has been a manufacturer's representative for 15 years. He spent 10 years with W. A. Cleary Chemical and now is with Nor-Am Chemical Co. His love for golf started when he was 7 years old. A golf course was built next door and he could not stay away. He worked on the golf course and in the clubhouse during his school years.

His territory has always been the Mid-Atlantic states. Presently, he is covering 6 states from Virginia to New Jersey. He is on the Board of the G.C.S. of New Jersey. This allows him to schedule and run their monthly meetings. He then writes about the meetings in their newsletter.

Nor-Am started into the turf and ornamental market by selling nitroform. Throughout the years, they added Banol, Prograss, Proxal and Turcam to their product line. Three years ago Nutralene was added and are hoping a new brown patch material will soon get a label.

**PENN STATE**

**VS.**

**BOSTON COLLEGE**

**OCTOBER 17TH**

**THE BUS WILL BE LEAVING FROM  
PARK VILLAGE PLAZA IN HUMELSTOWN**

**7:00 A.M. SHARP!**

**THIS HAS ALWAYS BEEN A FULL DAY  
OF FOOD AND FUN!!**

**\$45.00 PER PERSON INCLUDES  
BEER, SODA, LUNCH, SNACKS, BUS, AND TICKETS**

**CALL OR FAX PATTI (717) 761-5404**

**FOR RESERVATIONS**

**(LEAVE MESSAGE ON RECORDER)**

CENTRAL PA. GOLF COURSE SUPERINTENDENTS ASSOCIATION  
Meeting Notice:

DATE; TUESDAY, SEPT. 15, 1992

LOCATION; READING C. C.

HOST; Stuart Hartman

MEETING TIMES;

( BOARD OF DIRECTORS MEETING; 10A.M.)

LUNCH; 11:00P.M./buffet

GOLF; 1:00 Shotgun

TYPE OF TOURNAMENT; BLIND PARTNERS

SOCIAL HOUR; 6:00 P.M. - Cash Bar

DINNER- SIT DOWN, INFORMAL

COST; CART-\$15.00 (mandatory)

SHOWERS; yes

LUNCH - \$15.00

DRESS; casual (no jeans)

DINNER- \$20.00

PROGRAM; CHARLES PASSIOS, DIRECTOR OF THE GCSAA,  
~~SPEAKING ABOUT BYLAW CHANGES TO THE GCSAA.~~

.....  
MEETING RESERVATION AND DINNER POLICY

All dinners are pre-paid and depending on the club, lunch and golf may also be included in pre-paid cost.

All fees due for meeting must be mailed in time to reach the return address by the reservation deadline. If uncertain of your reservation, call Patti to confirm.

MONTHLY MEETINGS ARE PRE-PAID REGISTRATION ONLY-NO EXCEPTIONS.

You may cancel up to 48 hours prior to the reservation deadline and receive a full refund by contacting Patti Wall (717)761-5404 (not the host or hosting course).

It is in the bylaws of the CPGCSA, that monthly meetings are for members only. Exceptions are made at the discretion of the hosting superintendent.

.....  
RESERVATION FORM

NAME; \_\_\_\_\_ COURSE/CO. \_\_\_\_\_

ADDRESS; \_\_\_\_\_

MEMBER HANDICAP \_\_\_\_\_ GUEST HANDICAP \_\_\_\_\_

LUNCH-\$15.00 CARTS-\$15.00 DINNER-\$20.00= TOTAL \$50.00

DEADLINE; SATURDAY, SEPTEMBER 5TH -NO EXCEPTIONS PLEASE!!

CHECKS RECEIVED AFTER THAT DATE WILL BE RETURNED!

MAKE CHECKS PAYABLE TO CPGCSA

Patti Wall, 508 Spring House Rd., Camp Hill, Pa. 17011

**MEETING NOTICE!**

**SILVER CREEK COUNTRY CLUB**

**THIS IS A JOINT MEETING WITH THE PHILADELPHIA ASSOCIATION**

**OCTOBER 12TH, 1992**

**LUNCH; 11:00-12:30 \$12.00**

**GOLF: 12:30 SHOTGUN (REFRESHMENT ON COURSE)**

**COCKTAILS: 5:30-6:30 OPEN BAR**

**DINNER: 6:30 PRIME RIB BUFFET \$38.50**

**(COAT & TIE)**

**LUNCH + GOLF + DINNER = \$68.00**

**CALL SILVER CREEK COUNTRY CLUB**

**BILL YOB SUPERINTENDENT**

**(215) 838-0934**

# EDITORIAL

## PORTRAIT OF A GOLF COURSE SUPERINTENDENT

*By Carole Jackson*

A golf course superintendent has an easy job, because everyone knows, he has nothing to do, but be at 10 places at one time, in his office, the club house, the pro shop, at the board meeting, on the golf course, superintendent's meeting, club managers meeting and at home explaining to a spouse why he can eat only one meal at home (and even that one is usually cold).

He must be an engineer; conversant with the mechanical intricacies of gas and electric carts, lawnmowers, reels, wheels, tractors and trucks.

He must be a plumber, when it comes to irrigation systems, ponds, pools, and water fountains.

He must be an accountant, bills and dues collector, payroll supervisor, and of course the all important weather forecaster. (The superintendents cheat if they listen to the "little box" on their desk tell them what the weather will be like, instead of staying up until 11 p.m. to watch the news and WAIT for the forecast.)

He must spend like a drunken sailor and save like a miser, buying everything members want and still meeting the budget. He must withstand being chewed on both sides at once — one by the board and the other by the members.

He must be able to drink scotch with his greens-chairman, beer with his employees, and wine with his wife, punch with the ladies and ice water at *all* times. In all, drinking, he must portray the suave conversationalist, being adept at talking all day about things in general while saying nothing in particular.

He must be a man's man, a ladies man, a yes-man, a no-man, a businessman, a salesman, a kind father, mother, brother, sister, and uncle to all employees and members. (Someone we can all "look-up-to".)

On his busiest day, he will find at the last minute, his golf course is burning up, disease is all over the fairways, the ladies are having a tournament and want him to put out all the signs (in 3 minutes), someone scalped the 14th green, get the cart out of the pond, talk to the office secretaries about a problem they're having with the bills, and with a smile, he must accept the blame as his own and pacify the members, staff and the family, but everyone knows the superintendent really has nothing to do —



## Penn State Notes:

**Dr. Win Hock** has reported that 2,4-D reregistration is in jeopardy. The 2,4-D Task Force's "accelerated schedule" for filing overdue data did not pass the initial muster of an EPA official. The rodent studies which are behind schedule were required for reregistration and special review. There will probably be either agreement between the agency and task force on times for filing studies or suspension, the official predicted. The agency plans to decide whether to take regulatory action — possible suspension — against 2,4-D by August 1, officials said.

An unnamed EPA official predicted recently that methyl bromide will probably be phased out before the year 2000. That is the year when the Clean Air Act requires the worst of the ozone depleters to be eliminated from the market place.

EPA has decided that MSDS's are not regarded as labeling and can, therefore, be put in pesticide product cartons without first being reviewed by the agency.

**Dr. Pete Landschoot** has had a number of questions about nematodes. He suggests that all other possible turf decline possibilities be eliminated before suspecting nematodes. If, after eliminating all other reasonable possibilities, you choose to submit a sample for nematode assay, the following suggestions should be followed.

- Use one lab consistently, different extraction methods can result in conflicting suggestions.
- Take 15 to 30 cores ( $\frac{3}{4}$  to 1 inch diameter and 4 in. deep) per 500 to 1000 ft. Take all samples from affected areas. For comparison, another sample should be submitted from an adjacent, apparently healthy area. The soil (at least  $\frac{1}{2}$  pint) should be placed in a plastic bag to prevent desiccation. After collection, do not subject the soil to high temperatures; refrigerate and deliver as soon as possible.
- Provide the lab with the following information: 1) species of grass; 2) depth of sample; 3) use and rate of nematicide over the past several years; 4) occurrence of any symptoms suspected of being nematode injury; and 5) any stresses, disease problems or unusual occurrences that may have affected turf health.

Samples must be taken at one to two week intervals from June through September and filed for future reference.

New Jersey reports a number of calls over the past few months concerning leaf scorch, premature leaf drop, dieback, and death of trees and shrubs in ornamental planting. Species that are particularly affected include White Pine, Spruce, Red Oak, Maple, Arborvitae, Hemlock, Yew, and Juniper. In many cases, root injury due to extremes in soil moisture is to blame. The problem is most evident on plants located in poor sites (i.e., compacted soil, poor drainage, low fertility, etc.).

# GOLF NEWS

JOHN DOUGHERTY  
GOLF CHAIRMAN  
OVERLOOK GOLF CLUB

The winners from the Point Quota Tournament at Colonial Country Club were:

- 1st Place**—Jim Carville, Mark Hendrixson, Bill Rahling, Mike Prest (+16)  
**2nd Place**—Ed Scheck, Tony Goodley, Greg Roman, Tom Drayer (+11)  
**3rd Place**—Greg Fantuggi, Tom Kintzer, Mark Wilderman, Dave Rafferty (+7)  
**4th Place**—Tom Hollinger, Mike Olekowski, Jim McGall, John Abbott (+7)  
**5th Place**—Bob Johnson, Mel Leaver, Doug Morgan, Dave Hance (−4)  
**6th Place**—Jay Klein, Warren Savini, Jim Loke, John Chassard (−4)  
**7th Place**—Ron Krick, Eric Krick, Kevin Blouse, Jeff Blouse (−5)

Longest Drive—Greg Bolinger

Closest to Pin—John Segui

The tournament at Reading Country Club will be “Blind Partners”.

## G C S A A NEWS

### Report on turfgrass costs released

Golf course superintendents spend more than \$76.6 million annually on seed and sod, according to a report by the Center for Golf Course Management (CGCM).

The *1992 Turfgrass Species and Expenditures Report* breaks down these expenditures by course type (new development vs. established courses, etc.).

The report also examines species of seed and sod most commonly used on golf courses by areas of play (tees, greens, fairways and roughs). The information is further broken down by demographic categories and regions.

The *1992 Turfgrass Species and Expenditures Report* is available from CGCM for \$500. For more information, contact CGCM at 913/841-2240.

CGCM is the marketing research subsidiary of the Golf Course Superintendents Association of America.

### Maintenance expenditures report available

A research report which details golf course superintendents' expenditures on maintenance products and services over the last year is now available from the Center for Golf Course Management (CGCM). The *1992 Golf Course Maintenance Expenditures Report* offers detailed information on more than 25 specific maintenance budget areas including water usage, golf cart maintenance and capital expenses.

The 150-page report also addresses capital expense trends, the effect of a course's longevity on its operating budget, maintenance cost comparisons on new designs versus older, established facilities, and a variety of other categories. The report's information is broken down by specific demographic categories and regions.

The *1992 Golf Course Maintenance Expenditure Report* is available from CGCM for \$600. For more information, contact CGCM at 913/841-2240.

CGMC is the marketing research subsidiary of the Golf Course Superintendents Association of America.

## BOARD NEWS

Members: The Pre-pay policy for the next meeting hasn't been working as expected due to members not meeting the reservation deadline.

Unfortunately, at July meeting, members were turned away for golf.

It is your responsibility to mail your reservation in on time. If your club is responsible for sending your reservation to Patti Wall, then please check and make sure she has received it before the reservation deadline.

Effective immediately, any reservation received after the deadline date will be returned to you or the Club. Absolutely, no phone calls to Patti Wall or the hosting superintendent for reservation, they will be denied (Mail in Only)!

The reservation sheet for the next month meeting is inserted in the prior month Newsletter (4-6 weeks in advance). There is no excuse for not sending the sheets in on time. This policy will be enforced and no exceptions will be excepted. Thank you for helping us solve this important issue.

If you haven't received your name tag, please do so at this meeting.

"The following people have applied for membership into our association. If there are no written objections within the next seven days, they will be accepted into our association at the next meeting:"

David Strose  
TuTu Temple Country Club.....A  
Jeff Ondujack  
Coatesville County Club.....A

Thanks go to Mark Eichner, our social chairman for arranging a great trip to HersheyPark. We had 56 people for the day and what a beautiful day it was.

Many thanks to Sam Snyder, his ground staff and all the Colonial Country Club staff for a wonderful day. The course, as expected, was beautiful.

---

Affiliates! For those of you who had not sent your "Affiliate Highlight" information to Patti to be put into the newsletter, please do so right away. This is your opportunity to tell your clients about you and your company.

also

Don't forget our meeting at Fox Chase Golf Club in November where you the affiliates may sponsor a tee for \$100.00. There are still a few left. These are on a first come, first served basis. Contact Patti for more information.

Please Note, When you have questions or information for Patti, feel free to call Patti at her work (717) 761-8353. Patti is a full time Real Estate Agent for the Prudential Thompson Wood Real Estate. Just call and if she's not in, leave a message, or you can try Patti at her home (717) 761-5404.